



MISSION 02: WELCOME TO SUSE – SUPPORTING DOCUMENTATION

OPERATION PIERCING FURY CAMPAIGN



OBJECTIVES

Campaign Objectives Include:

- Bringing order to the region.
- Eliminate the terrorist nexus inside of Georgia.
- “Capture-or-Kill” High Value Targets and / or War Criminals in the region.

Mission Two - “Welcome to Suse” Objectives:

- Provide CAS and CASEVAC support for Ground Forces (Voodoo-23 & 24).
- Assist in Capturing or Killing Tango-6 (HVT).
- Complete tasks as directed by the Operational Commander in the region (Whiplash-1).



AFTER ACTIONS REPORT – MISSION 01 – THE AO

AFTER ACTIONS REPORT (AAR)

Mission One - "The AO" Objectives:

- Follow your established flight path around the Area of Responsibility.
- Provide CAS to Ground Forces in the region if requested.
- Complete tasks as directed by the Operational Commander in the region (Whiplash-1).

COMPLETED

15 June 2015 - Hawg Flight successfully completed their orientation flight in the Area of Responsibility. Hawg Flight assisted Rodeo 4-5 (SF, Delta Force, Detachment Alpha Team Lead) in destroying a suspected IED factory compound at LM 19797 59710. Follow-up investigation confirmed the presence of IED's and enemy insurgents were present at the target building. Col. Stevens (Whiplash-1) has certified Hawg Flight ready for combat, and assigned them for direct support of Joint Special Operations Command (JSOC) elements in the region. No further action or recommendations required. ///END OF REPORT///



FLIGHT PATH – WEATHER INFORMATION

Date: July 2, 2015
Time: 1830 Hours Local
Temp: 26° C / 78° F
Weather: Partly Cloudy
Wind: Light



Clouds and Atmosphere

Base: 600 meters

Thickness: 770

Light to Medium Density

QNH: 755

Wind

@10m - 5m/s - Direction: 160

@2000m - 8m/s - Direction: 243

@8000m - 7m/s - Direction: 71

Turbulence

12 m/s

NOTAM

None at this time



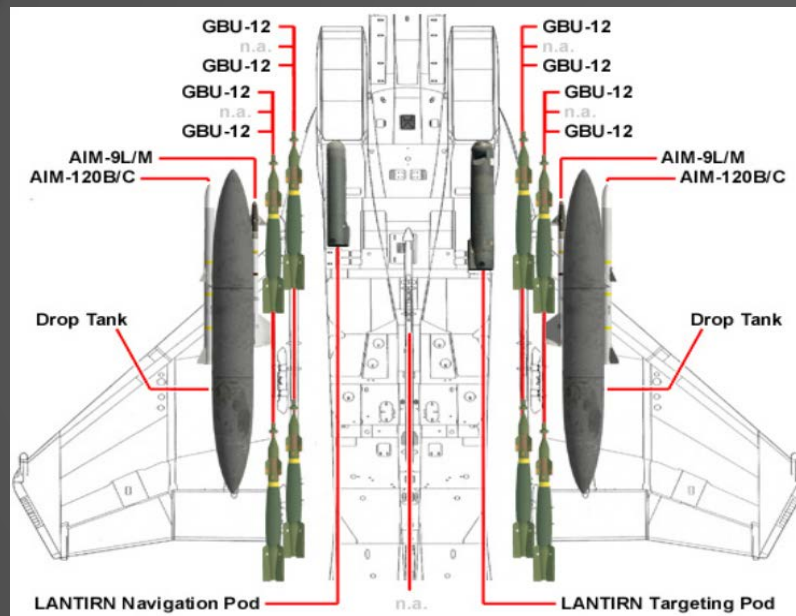
WP1 & WP2 ARE POSITIONED DIRECTLY @
GROUND LEVEL FOR EASY REFERENCE.
MAINTAIN 8,000 FT ALONG FLIGHT PATH



"Welcome to Suse"

LOADOUTS

LOADOUTS



"HAWG" FLIGHT - A-10C

Fuel 90%, Weight 99%

Chaff / Flare 240 / 120

LOAD OUT:

100% Gun Ammo

8x: GBU-12

2x: AIM-9M

2x: AIM-120C

1x: AN/AAQ-14 LANTIRN TGP

1x: AN/AAQ-13 LANTIRN NAVPOD

Hawg 1, 2, 3, & 4



PLAN OF ATTACK

"Capture or Kill"

Area of Responsibility (AOR)

30 km Zone Radius from FOB Suse
16.2 nm

FOB Suse

Kutasi AB

Target AO

Tsutshvati

17 km
9.2 nm

17 km
9.2 nm

RED SHADED AREA INDICATES TRIBAL CONTROLLED REGION

Entire Area inside of the AOR is extremely hostile!

Once Hawg, Reaper, and Hellraiser Flights RV FOB Suse AO, Pontiac I-1 will make contact for dustoff

Pontiac I-1 & I-2 Standing by at FOB Suse

FOB Suse

SITREP will be given while all flights are in the air enroute to FOB Suse

Objective 1

Hawg, Reaper, & Hellraiser Flights Escort Pontiac I-1 & I-2 to Target AO LZ

Objective 2

Hawg, Reaper, & Hellraiser Flights Provide CAS to Voodoo teams as directed

"Voodoo-23"



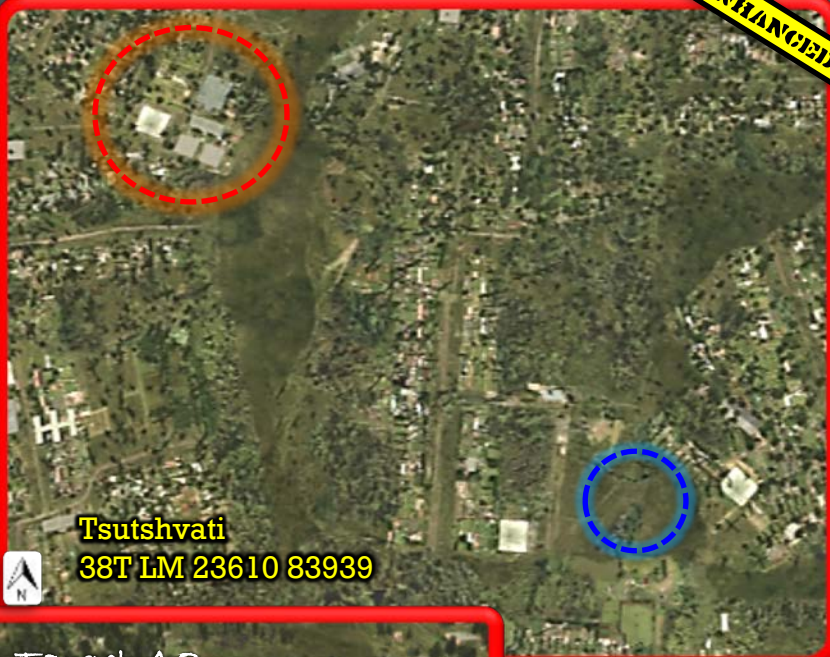
"Pontiac 1-1 / 1-2"



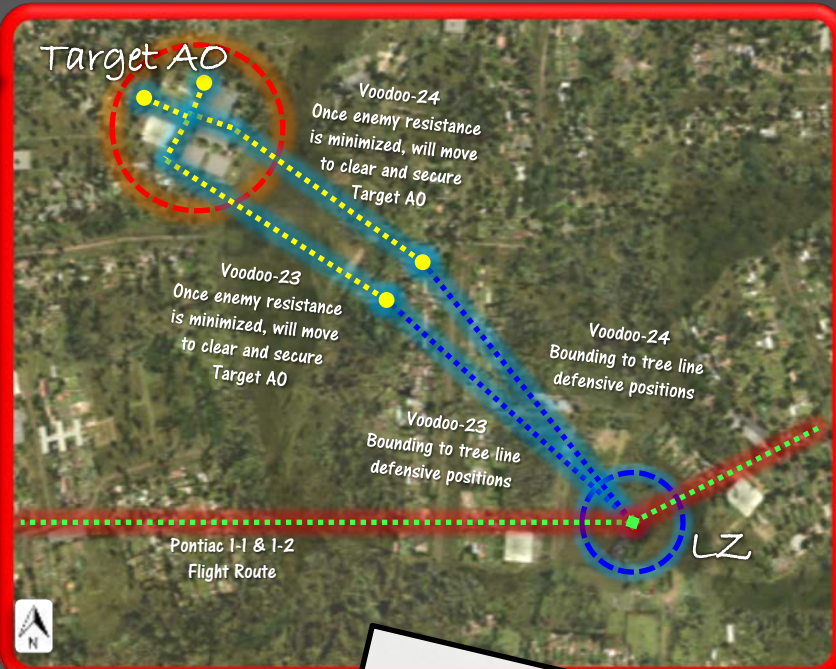


PRIMARY TARGET

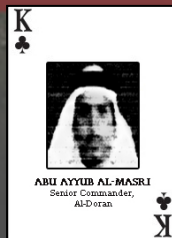
ENHANCED



Tsutshvati
38T LM 23610 83939



Target AO



CODENAME: TANGO-6
ABU AYYUB AL-MASRI
SENIOR COMMANDER OF AL-DORAN
BORN 1968
EGYPT

Capture or Kill Order
Authorization to Capture or
Kill Tango-6





REGIONAL MAP

"The AO"

Area of
Responsibility
(AOR)

30 km Zone Radius
from FOB Suse
16.2 nm

FOB Suse

Kutaisi AB

17 km
9.2 nm

SAM Threat in the
region is extremely
low to non-existent

Entire Area inside of the
AOR is extremely hostile!

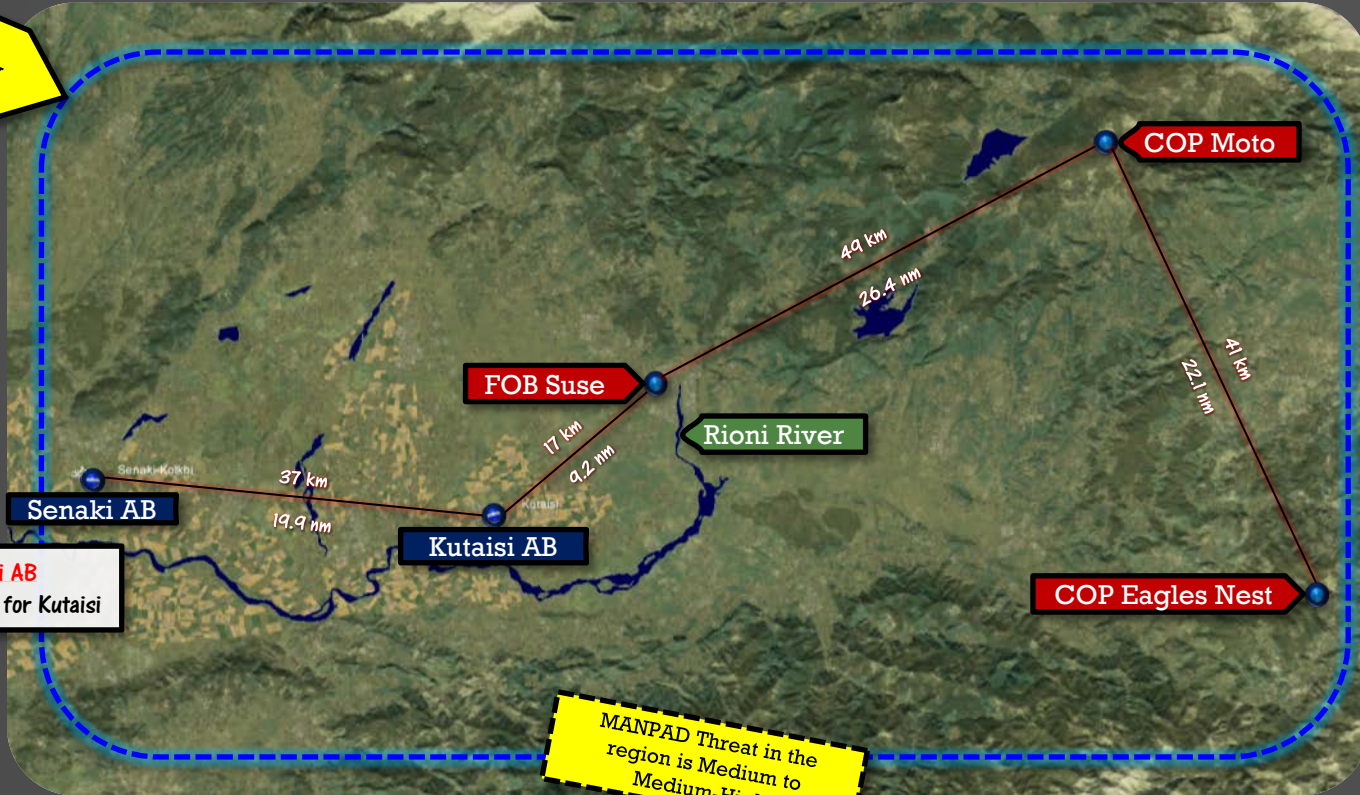
RED SHADED AREA
INDICATES TRIBAL
CONTROLLED REGION





REGIONAL MAP (AOR)

Area of
Responsibility
(AOR)



Senaki AB
Alternate AB for Kutaisi

MANPAD Threat in the
region is Medium to
Medium-High

